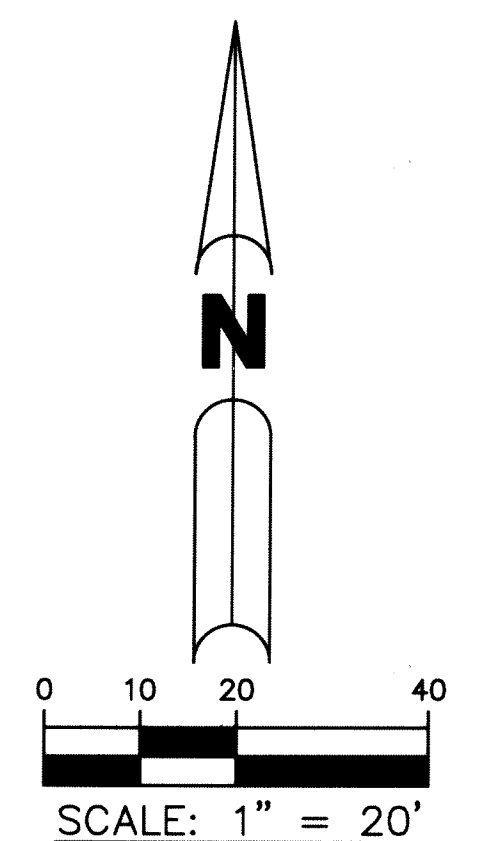
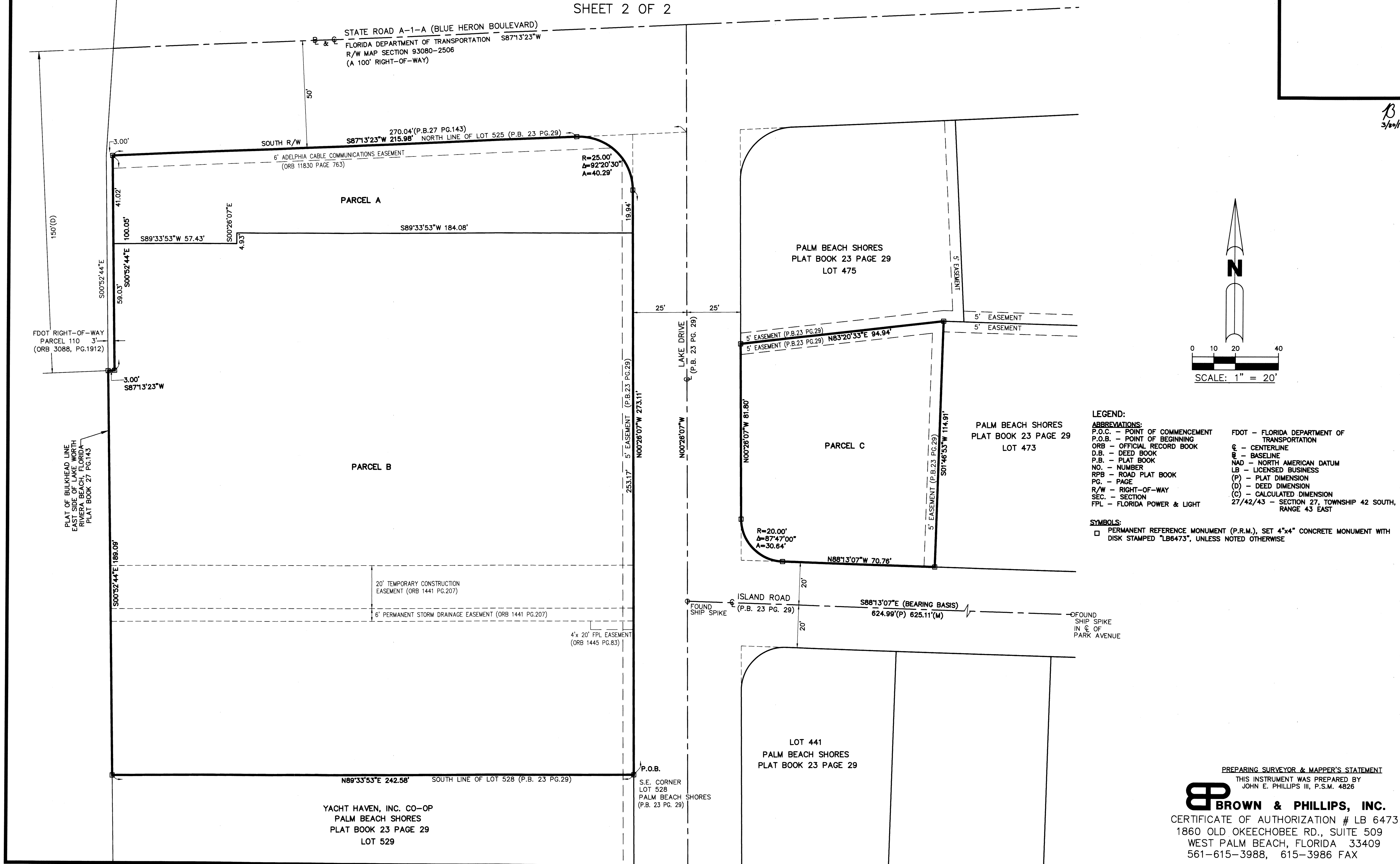


SINGER ISLAND GATEWAY

LYING IN SECTION 27, TOWNSHIP 42 SOUTH, RANGE 43 EAST,
CITY OF RIVIERA BEACH, PALM BEACH COUNTY, FLORIDA,
BEING A REPLAT OF LOT 474 AND LOTS 525-528, PLAT OF
PALM BEACH SHORES, RECORDED IN PLAT BOOK 23, PAGE 29,
OF THE PUBLIC RECORDS OF PALM BEACH COUNTY, FLORIDA

SHEET 2 OF 2



LEGEND:

ABBREVIATIONS:
 P.O.C. - POINT OF COMMENCEMENT
 P.O.B. - POINT OF BEGINNING
 ORB - OFFICIAL RECORD BOOK
 D.B. - DEED BOOK
 P.B. - PLAT BOOK
 NO. - NUMBER
 RPB - ROAD PLAT BOOK
 PG. - PAGE
 R/W - RIGHT-OF-WAY
 SEC. - SECTION
 FPL - FLORIDA POWER & LIGHT

FDOT - FLORIDA DEPARTMENT OF TRANSPORTATION
 C - CENTERLINE
 B - BASELINE
 NAD - NORTH AMERICAN DATUM
 LB - LICENSED BUSINESS
 (P) - PLAT DIMENSION
 (D) - DEED DIMENSION
 (C) - CALCULATED DIMENSION
 27/42/43 - SECTION 27, TOWNSHIP 42 SOUTH, RANGE 43 EAST

SYMBOLS:
 □ PERMANENT REFERENCE MONUMENT (P.R.M.), SET 4"x4" CONCRETE MONUMENT WITH DISK STAMPED "LB6473", UNLESS NOTED OTHERWISE

PREPARING SURVEYOR & MAPPER'S STATEMENT
 THIS INSTRUMENT WAS PREPARED BY
 JOHN E. PHILLIPS III, P.S.M. 4826

BROWN & PHILLIPS, INC.
 CERTIFICATE OF AUTHORIZATION # LB 6473
 1860 OLD OKEECHOBEE RD., SUITE 509
 WEST PALM BEACH, FLORIDA 33409
 561-615-3988, 615-3986 FAX